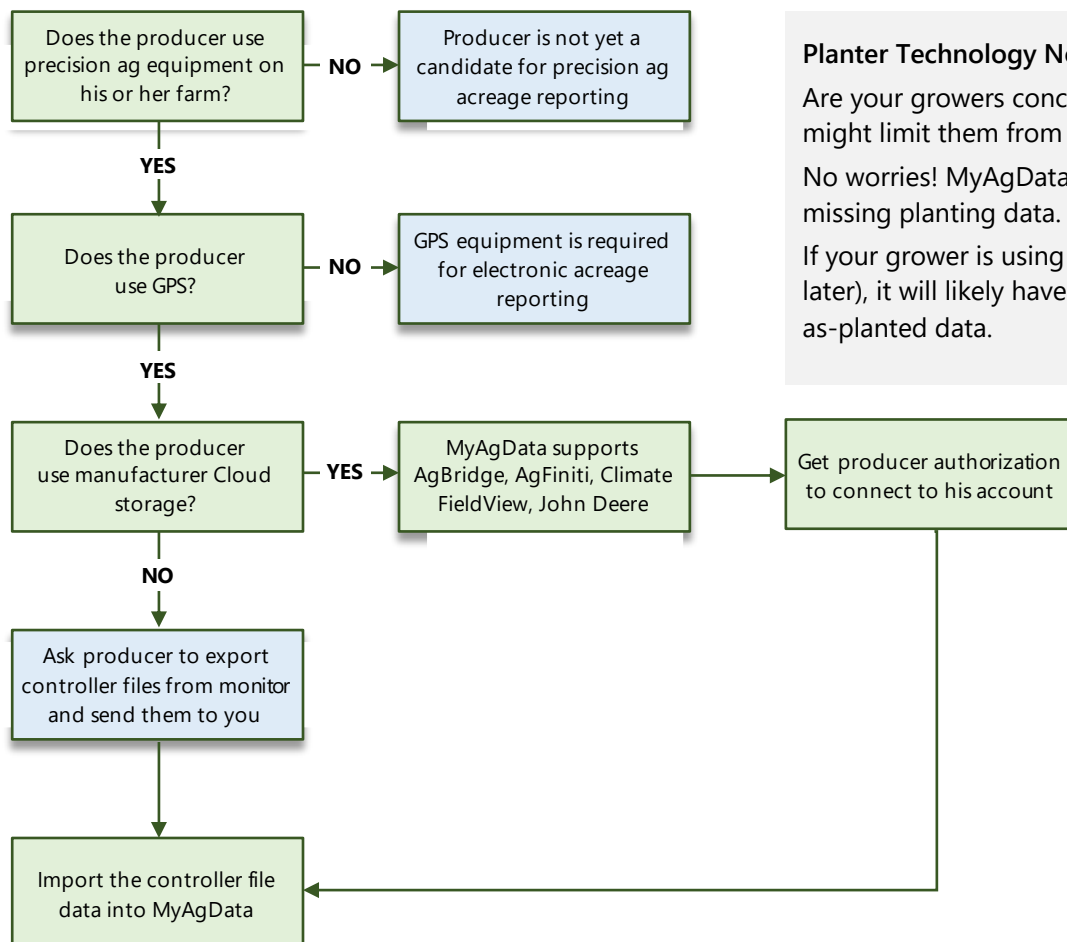


IS YOUR PRODUCER READY FOR PRECISION AG?

We've created this guide to help you determine a producer's ability to collect and supply the geospatial data you need for accurate crop acreage reporting.



Planter Technology Note

Are your growers concerned their precision ag technology might limit them from being able to report accurately?

No worries! MyAgData® has tools to help you correct any missing planting data.

If your grower is using a newer air seeder (2010 models or later), it will likely have the needed technology to record as-planted data.